

ELBA C



**QUICK POSSESSION**

**47, 200 Belmont Street**

1205 SQ FT || 2.5 Bath 2 Bed || Double Tandem Garage

**\$399,999**

**CONTACT US**



**KARAN KUMAR**  
AREA SALES MANAGER

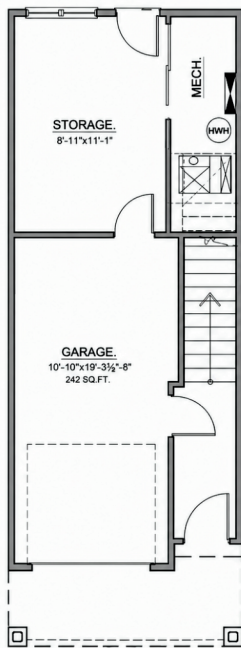
☎ 587.664.5394

✉ [k.kumar@luxuriahomes.ca](mailto:k.kumar@luxuriahomes.ca)

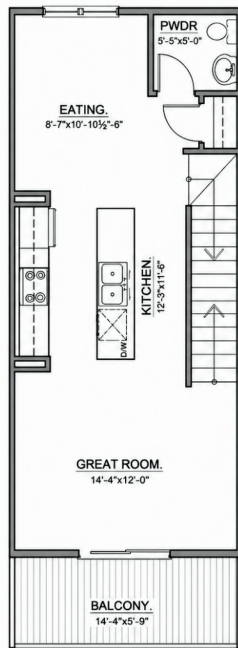
**SAAD RANA**  
AREA SALES MANAGER

☎ 587.664.5394

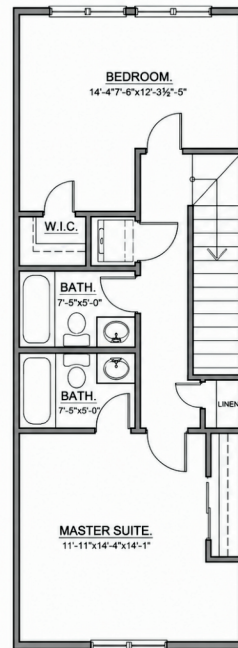
✉ [s.rana@luxuriahomes.ca](mailto:s.rana@luxuriahomes.ca)



**LOWER FLOOR**  
48 SQ.FT. DEVELOPED ENTRANCE  
242 SQ.FT. GARAGE



**MAIN FLOOR**  
524 SQ.FT.



**UPPER FLOOR**  
633 SQ.FT.

## ELEVATED INTERIORS

- Premier party wall detailing to ensure maximum privacy and efficiency
- Tiles in all bathrooms and entry ways
- LVP throughout main floor
- Carpet on stairs and bedrooms
- 3-inch baseboards and
- 2.5-inch window casing and door moulding
- MDF Banister in white lacquer with metal spindles (plan dependant)
- Choice of 7 ft passage door style from builder standard options (1 style option throughout home)

## INSPIRED BATHROOMS

- Delta/Moen plumbing textures
- 40" high bathroom mirrors
- Under mounted sinks with vanity in all bathrooms
- Quartz or Granite for all counters on all bathrooms
- Low flow toilets and shower heads

## DESIGNER KITCHEN

- Ceiling height melamine cabinets with straight riser to ceiling
- Stainless Steel Samsung appliance package
- 30 inch electric oven stove
- Microwave with over the range hood fan
- Dishwasher and
- French Door Fridge
- 2 pots and pan drawers, metal tandem drawer slides
- Soft close cabinetry

## CLASSIC, NEUTRAL, LUXURY



## COMFORT AND ENERGY EFFICIENCY

- Home fully vapor wrapped for energy efficiency
- Low-E argon filled windows
- Programmable thermostat
- Flow through humidifier
- 50 gallon electric hot water tank
- Air circulation recovery system
- High efficiency heating



**LUXURIA HOMES**  
inspired homes for inspired living



WWW.LUXURIAHOMES.CA