



ROMA

2500 – 3700 SQFT

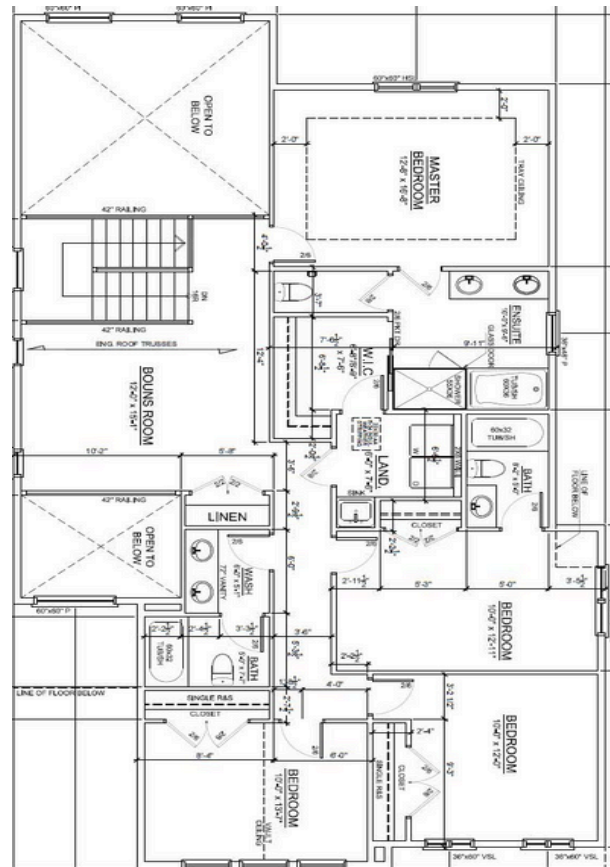
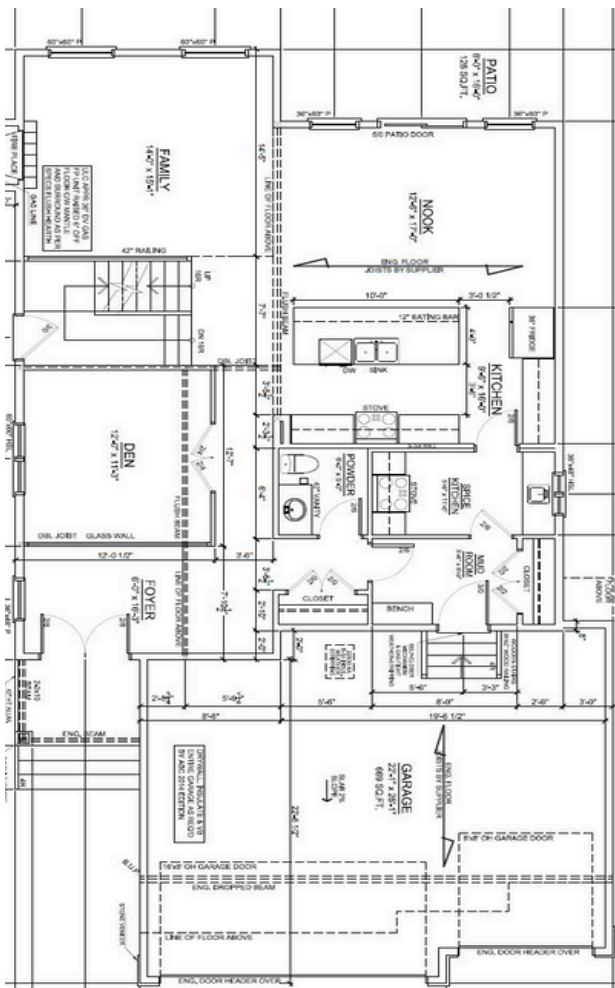
Introducing the Roma - a stunning and spacious home plan designed to meet your every need. With two open-to-below spaces and the option for a butler's or spice kitchen, this home is perfect for entertaining guests or simply enjoying a quiet night in. On the main floor, you'll find not one but two master ensuites, a convenient laundry room, and another bonus room. The elegant master suite is the ultimate oasis, featuring a luxurious en suite and plenty of closet space.

Upper Level

1463 SQFT



- 2 BEDROOMS
- 1 FULL BATHS
- 1 LAUNDRY
- 1 BONUS
- 2 MASTER BEDROOM
- 2 MASTER ENSUITE
- 2 MASTER WALK-IN CLOSET



Main Level

1287 SQFT

- 1 HALF BATH
- 1 OPEN TO ABOVE
- 1 OPEN CONCEPT KITCHEN/FAMILY AREA
- 1 LIVING ROOM/BEDROOM OPTION
- 1 BUTLER'S PANTRY/SPICE KITCHEN OPT.
- 3 GARAGES



Images and dimensions found within renderings and concepts are not intended to form any contractual obligations, not all items depicted are standard. EOD. All rights reserved, including the right to reproduction in whole or in part, without the permission of Luxuria Homes.



LUXURIAHOMES.CA

