



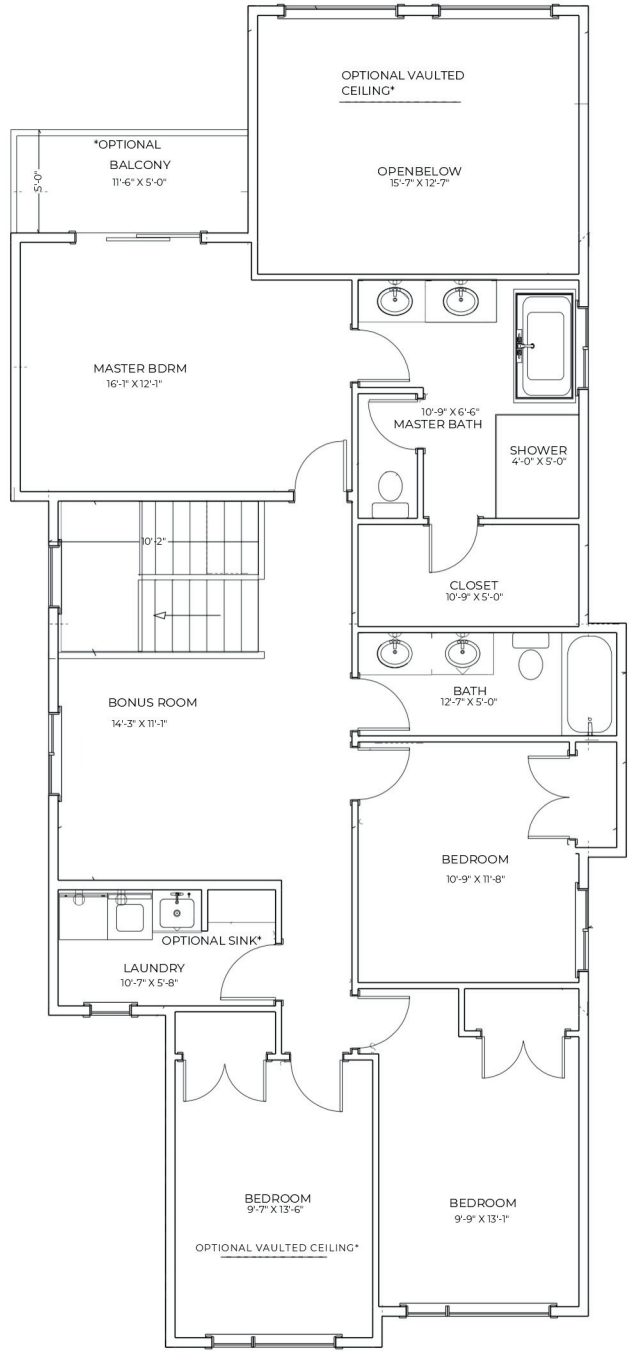
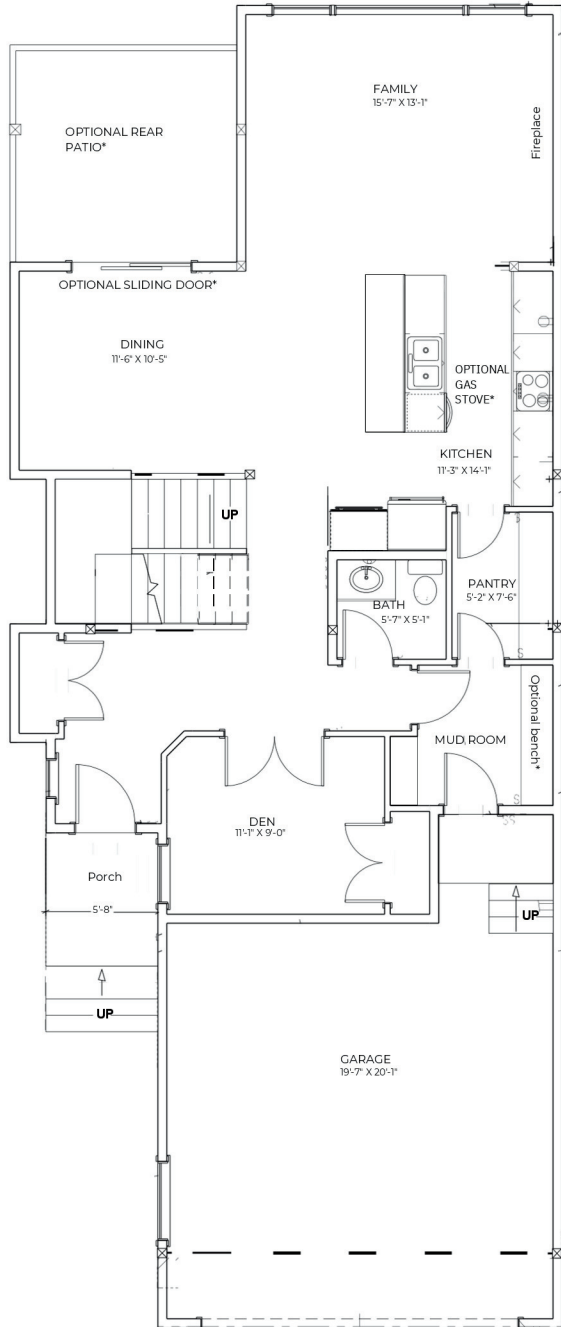
## VIA

2306 SQFT. || 2.5 Bath 4 Bed

Designed for modern family living, The Via offers an open-concept main floor that connects the family, dining, and kitchen spaces for seamless flow. A front den provides flexibility for work or guests, while the walk-through pantry and mudroom enhance everyday function. Upstairs, a spacious bonus room anchors the layout, joined by a serene primary suite with a spa-inspired ensuite and walk-in closet, plus three additional bedrooms. With options like a vaulted ceiling, rear patio, or balcony, The Via perfectly blends comfort, versatility, and style.

# Upper Level

1244SQFT



# Main Level

1062 SQFT