



AMARE

1401 SQFT

The elegant Amare provides a perfect balance of function and design features a spacious entrance and mudroom with custom bench, and shelving. The open plan kitchen and great room are perfect for family gatherings and entertaining, this plan is completed with a spacious master bedroom including a luxury custom walk-in closet and a 5 piece spa inspired ensuite. With many options to customize, the Amare is the perfect plan to let your personality shine through

FEATURES

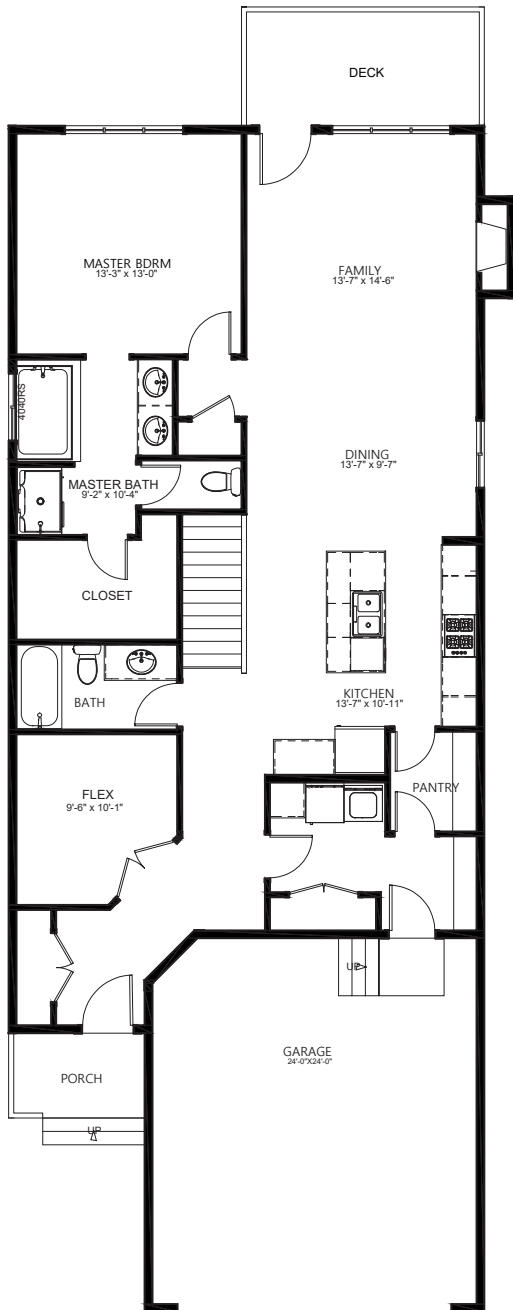
- » Mudroom with Custom Bench and Shelving
- » Open Concept plan
- » Gourmet Kitchen with Oversized Island
- » Butler's Pantry
- » Large Master Suite with Custom Closet
- » 5 Piece Spa-Inspire Ensuite

2 BEDROOMS

1 HALF BATH

1 FULL BATH

3 CAR GARAGE



< Main Level

1401 SQFT

- 1 MASTER BEDROOM
- 1 FULL BATH
- 1 HALF BATH
- 1 MUDROOM
- 1 OPEN CONCEPT KITCHEN/FAMILY AREA
- 1 BUTLER'S PANTRY
- 1 REAR PATIO
- 1 FLEX ROOM
- 3 CAR GARAGE



Images and dimensions found within renderings and concepts are not intended to form any contractual obligations unless otherwise stated. © 2019 All rights reserved, including the right to reproduction in whole or in part, without the permission of Luxuria Homes.



4515 112 Ave SE, Calgary, AB T2C 5C5



luxuriahomes.ca